

## Re-sizing and removing metadata In Lightroom

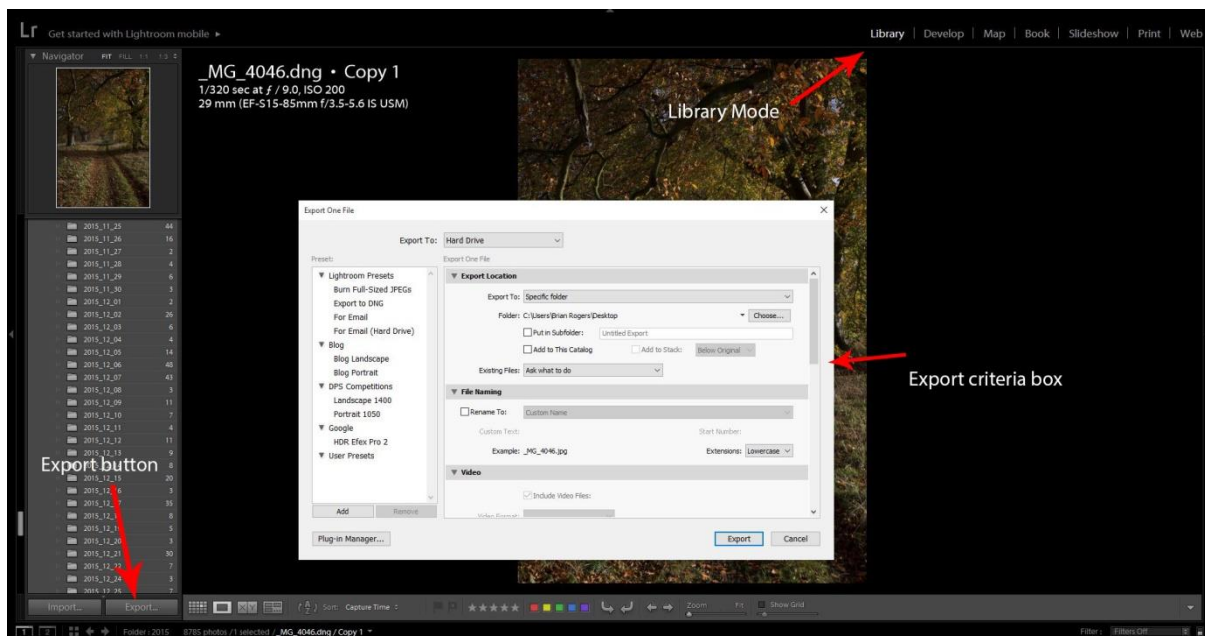
This explanation may look very long winded, but to any member who has just acquired Lightroom, this is almost an idiots (I can do it) guide as to how to resize for competitions and at the same time remove metadata.

I will walk you through the steps, but in the end, I urge you to make two presets, one for portrait shots 1050 pixels maximum height and one for Landscapes maximum width 1400. You will then find if you want to export any image for competition, you just need to press one button!

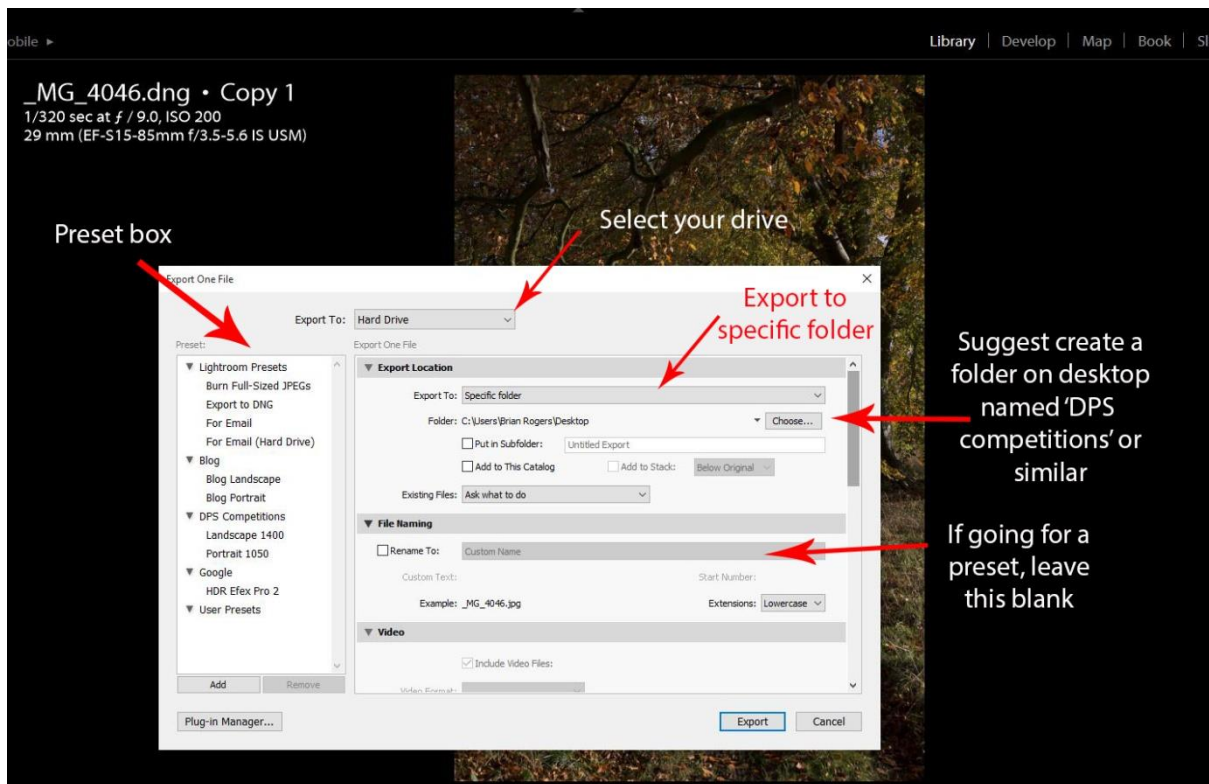
I have used a portrait size image for this example.

First, before we do anything else, pull down the slider on the extreme right edge, to reveal the Metadata panel. You need to look at the dimensions. If you have cropped the image it will show the new dimensions. If your image is something short of a square, you will need to know which of the sides is the longest, height or width and make a note of them.

You should now right click on the desktop and create a new file for exported competition entries. Name it DPS competitions or something similar. You will put all the images in there – this is relevant for creating presets – (more at the end).



With the image selected (this one is in RAW format) in 'Library' mode, click on '**Export**' button (bottom left) to reveal the Export criteria box.



The left hand column is for 'Presets' - more later.

For now, box 1 right at the top – pull down menu asks you which drive you are going to export the image(s) to. Select the appropriate drive.

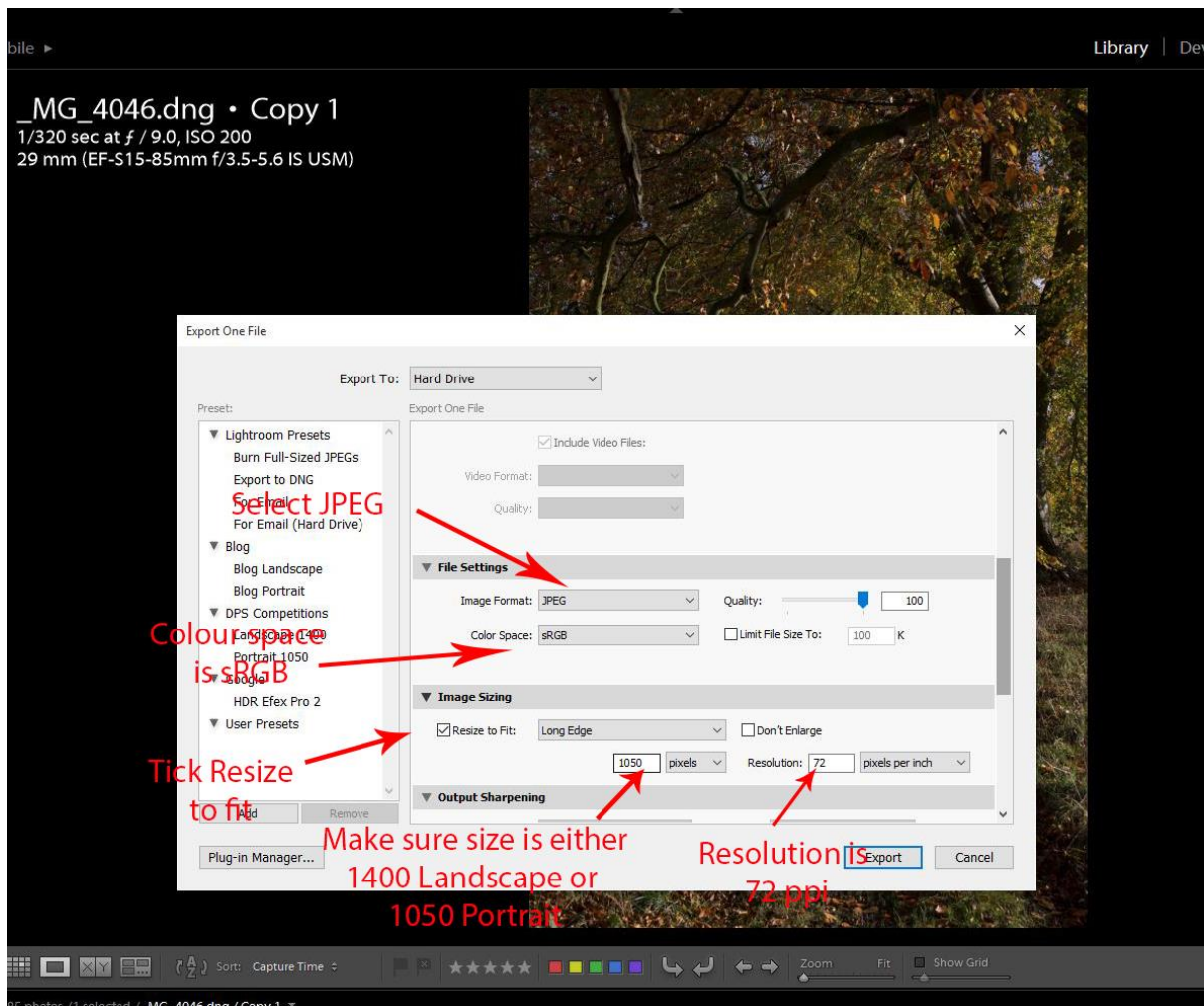
Then, under that – '**Export Location**' – You have three choices, but in this case, I am exporting the image to 'my desktop'. I have selected the drop down menu '**Specific Folder**'. This then allows me to head for the Desktop, where I have decided the exported image will go.

At this stage do not put any ticks in other boxes, but go straight to the drop down menu, against '**Existing Files**'. Make sure the 'Ask what to do' is selected, then go to the next box down – '**File Naming**'.

In this area, putting a tick in the box next to 'Rename to' will give you options to rename your file.

We are going to keep the existing file name, so we do not tick any box here and move on.

Do not do anything with the next part – named ‘Video’ – go straight to the box below – ‘**File Settings**’. It is here that you will begin to transform your image.



**Image Format** – select JPEG from the drop down menu and put your quality to 100 (it can be less – but for now select 100).

**In Colour (or color) Space** – our entries need to be in sRGB, so select that from the drop down menu.

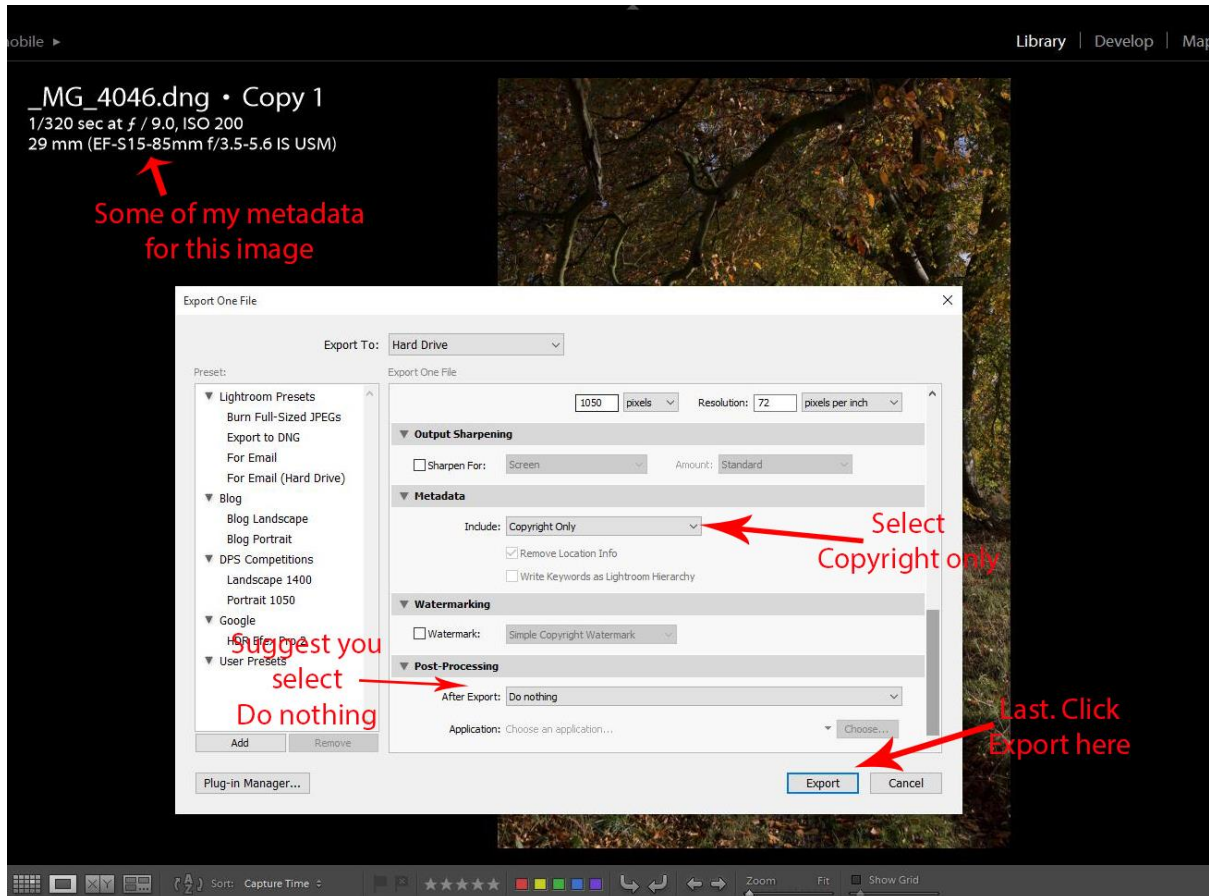
Leave the limit file size box unchecked and move down to the next part – **Image sizing**.

This is where you need to remember if your image is landscape or portrait **or more to the point, which one of the measurements of your image is the longest**.

Now, armed with this knowledge, tick the **resize to fit box**. Then you will be presented with a drop down menu. **Select ‘Long Edge’** and in the box immediately below type in either 1050 for portrait or 1400 for landscape images (the programme

will automatically size the other side in proportion). **Make sure the drop down menu next to this has 'Pixels' displayed.**

Next box, **put the resolution at 72** and again make sure 'pixels per inch' is selected.



If you have already sharpened your final image, miss out the next box titled 'Output Sharpening' and move on to the **'Metadata' box.**

Here, we are asked for what we want to include. The drop down menu gives you a few choices, but for competitions, we want as little as possible. Unfortunately, Lightroom does not allow us to remove the copyright data.

So, **in the drop down menu select the top of the list – Copyright Only.**

Leave everything else, move onto the next box – **Watermarking**. In club competitions, we do not want to see any copyright watermarks across the image, so leave the Watermark box blank.



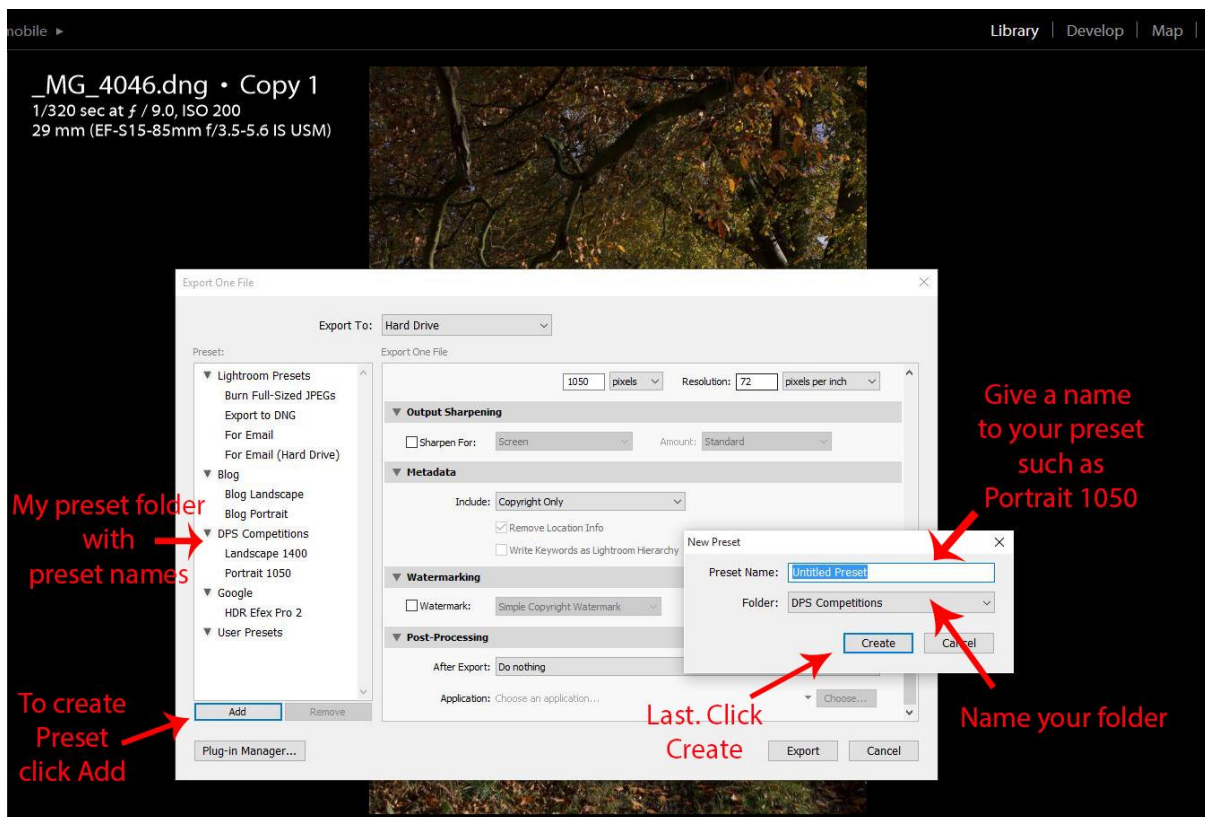
Last is the **Post processing**. This is asking what you want to do once the image has been re-sized and moved. Again, the drop down menu gives you options, you could open it in Explorer or Photoshop or some other software to have a look to make sure it looks okay. **I tend to tick the option – Do nothing.**

Last. **Click Export (bottom right of this box)** and your image will be resized, stripped of metadata (but not copyright) and ready for competitions. The example we have just gone through was a portrait shot, to use a landscape shot everything else is exactly the same apart from the longest edge will be 1400 pixels.

## PRESETS

I did say I would help you make Presets **to make things very easy.**

To do this, prior to clicking the Export box, at the **bottom of the preset box – extreme left, click on the Add button.**



This brings up a choice of what to name the preset and which folder (within presets) you want to keep it in.

**If you look at mine, I have made a folder called DPS Competitions. Giving a simple name for the presets of either Landscape 1400 or Portrait 1050.**

Make sure you follow the instructions from top to bottom and create one preset for longest edge 1050. Then start again and make another one (with a landscape image) for longest edge 1400 and name them.

Now, when you are ready to export an image for competitions and you want to resize and wipe the metadata you do this with the Preset.

Simply click on the Export button (bottom left of main screen) to open up the dialog box, just click on Portrait 1050 in your preset or Landscape 1400 and it will automatically set all the parameters you have selected. The image will appear in the file you selected originally, all ready for competition – Magic!

The beauty about doing it this way is, you could select as many images as you wanted (albeit either portrait or landscape – **not mixed**) and resize and remove metadata with one action.

I would just add that once you have done all the above, your images will be in the folder you created on your desktop, with the original image name(s).

To complete the process for DPS competitions, right click on each image and select Rename.

Suppose my DPS competition number is 150, and I was renaming the first (titled 'Autumn Path') of two images submitted to the Milne 1 competition. The renaming protocol should be as follows:

01\_150\_Autumn Path\_Milne1

### **Important:**

With Lightroom, the copyright details cannot be removed. It will not apply to most members, but if you have copyright embedded in your image, then you will have to turn to Photoshop, Elements or perhaps some other system on the web to remove it (see my other tutorial on Photoshop).

If you do have great problems, I will remove it for you, so long as you let me know in advance.

Brian Rogers.